



# Configuration Distribution in CE Terminals

---

A Technote by  
Systems Engineering

January 2005

## Summary

This technote describes how to distribute the configuration settings of a CE terminal to other terminals of same model.

## Audience

1st Level Support, Product Support Group.

Please note that it is assumed that the reader knows about *bundle32* and *Rapport* s/w.

## Affected Products

All CE Terminals.

## Issue

Sometimes it is required to configure a no. of CE Wintems with same setting. The best way to do this would be configure one terminal with required settings and then transfer the settings to other terminals.

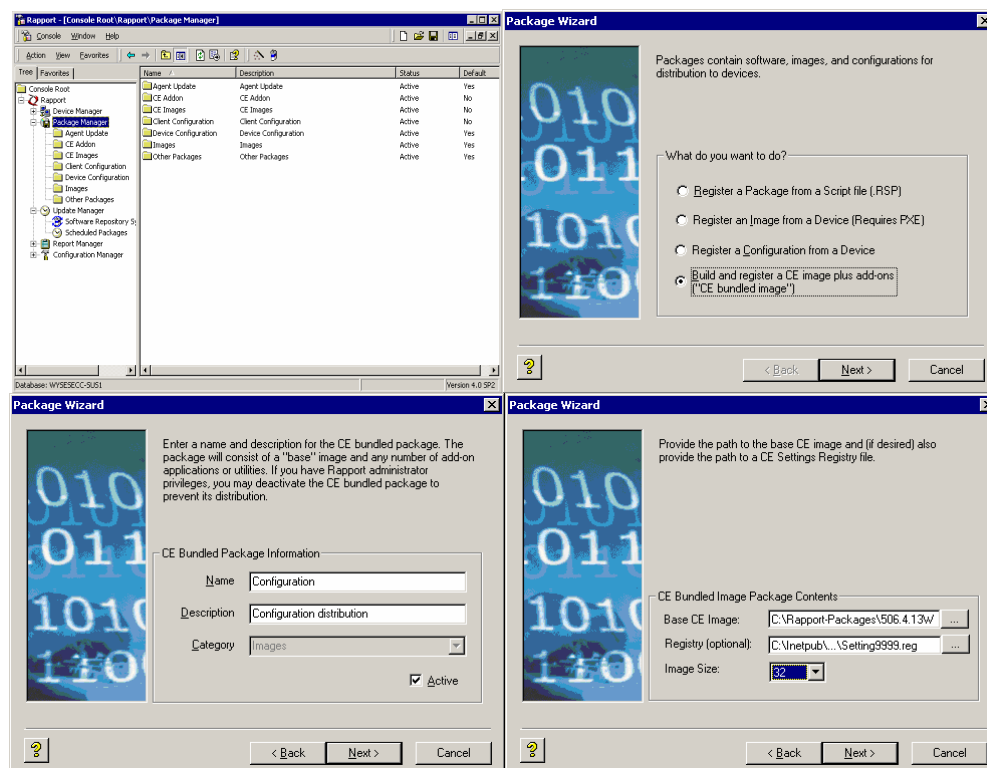
## Solution

There are two ways we can distribute settings of a CE terminal to other terminals of same model.

1. By creating an addon using Bundle32 tool
  - a) Restart in Factory Default mode
  - b) Pull the configuration registry using Rapport in Replace mode without excluding anything
  - c) Configure the terminal to the required setting. If the changes you made does not require any reboot skip to step E
  - d) If the configuration needs a reboot then the registry changes top down. Hence it would be difficult to compare with the 1<sup>st</sup> registry file in step F. To arrange the registry in previous order just open keyboard option in Control Panel, without modifying anything click on OK and reboot the terminal
  - e) Pull the terminal registry using Rapport (second time)
  - f) Use a tool such as Windiff to do a registry comparison and only keep the CHANGED values
  - g) Do a manual scan of the registry and eliminate terminal or environment specific keys (such as TSCALs)
  - h) Add in Registration lines (item in the top of the registry that allow the terminals name and build number to be seen by the add-on menu) to the difference registry file. A sample of the header as follows:-

```
[HKEY_LOCAL_MACHINE\Software\WYSE\AddOn\Config]
"Name"="Configuration Change: Version 1.0"
"Build"="0001"
```

- i) Rename the registry file to *setting9999.reg*. If you also bundle a copy of that file which was renamed to *factory9999.reg* you have also the ability to G-key reset the unit to your factory-defaults with changed configuration
  - j) Use bundle32 to generate an add-on
  - k) Push the add-on via Rapport or FTP transfer
2. By Rapport Device Management Software
- a) Restart in Factory Default mode
  - b) Configure the terminal to the required setting
  - c) Pull the configuration registry using Rapport in Replace mode without excluding anything
  - d) Find out the *setting.reg* file created in the last step and rename the same to *setting9999.reg*
  - e) Create a “CE Bundled Image” rapport package with the padded image loaded in the terminal as follows:-



- f) Distribute the package to other terminals through Rapport.

## Explanation

We have renamed the *setting.reg* file so that all settings are really merged and not overwritten by default settings from eg. the primer. Please note that you need to use the latest Regfilter file so that all the configurable settings are extracted by Rapport. Please also note that the first method of distributing the configuration changes is better as this process enable you to retain the changed settings even in factory reset case.

## Limitation of Liability

IN NO EVENT SHALL MANUFACTURER, MANUFACTURER'S SUPPLIERS, ANY THIRD-PARTY PRODUCER, OR ANY OTHER PARTY THAT HAS BEEN INVOLVED IN THE CREATION, PRODUCTION, OR DELIVERY OF THE DOCUMENT BE LIABLE FOR ANY DIRECT, CONSEQUENTIAL, INCIDENTAL, INDIRECT, OR SPECIAL DAMAGES, INCLUDING WITHOUT LIMITATION LOST PROFITS OR LOSSES RESULTING FROM BUSINESS INTERRUPTION OR LOSS OF DATA, REGARDLESS OF THE FORM OF ACTION OR LEGAL THEORY UNDER WHICH THE LIABILITY MAY BE ASSERTED, EVEN IF ADVISED OF THE POSSIBILITY OR LIKELIHOOD OF SUCH DAMAGES.

THIS DOCUMENT IS PROVIDED "AS IS" WITH NO WARRANTIES WHATSOEVER, INCLUDING ANY WARRANTY OF MERCHANTABILITY, FITNESS FOR ANY PARTICULAR PURPOSE, OR ANY WARRANTY OTHERWISE ARISING OUT OF ANY PROPOSAL, SPECIFICATION OR SAMPLE. MANUFACTURER DOES NOT WARRANT THAT THE INFORMATION CONTAINED IN THE DOCUMENT OR ANY SOFTWARE REFERRED THEREIN WILL MEET YOUR REQUIREMENTS OR THAT THE OPERATION WILL BE UNINTERRUPTED OR ERROR FREE. SOME JURISDICTIONS DO NOT ALLOW THE LIMITATION OR EXCLUSION OF LIABILITY FOR INCIDENTAL OR CONSEQUENTIAL DAMAGES, SO THE ABOVE LIMITATION OR EXCLUSION MAY NOT APPLY TO YOU.



If you have a technical enquiry please use the online knowledge portal at <http://www.wyse.com/serviceandsupport/support/askwyse.asp> or contact the numbers mentioned below.

**Wyse Technology Inc.**  
3471 North First Street  
San Jose, CA 95134-1801

**Wyse Sales:**  
800 GET WYSE  
(800 438 9973)

**Or send email to:**  
sales@wyse.com

**International Sales:**  
Australia 61 2 9319 3388  
France 33 1 39 44 63 85  
Germany 49 89 460099 26  
Taiwan 886 3 577 9261  
UK 44 118 982 8335  
United States 408 473 1200

**Visit our websites at:**  
<http://www.wyse.com.au>  
<http://www.wyse.fr>  
<http://www.wyse.de>  
<http://www.wyse.com.tw>  
<http://www.wyse.co.uk>  
<http://www.wyse.com>

**Wyse Customer Service Center:**  
800 800 WYSE  
(800 800 9973)

© 2005 Wyse Technology Inc. All rights reserved. This material is copyrighted. You may not reproduce, transmit, transcribe, store in a retrieval system, or translate into any language or computer language, in any form or by any means, electronic, mechanical, magnetic, optical, chemical, manual or otherwise, any part of this publication without express written permission. Wyse, WY, and WyseWorks are registered trademarks, and the Wyse logo, Winterm logo, Wyse, and Winterm are trademarks of Wyse Technology Inc. ICA is a registered trademark and MetaFrame is a trademark of Citrix Systems Inc. Rapport is a registered trademark of Rapport Technologies, Inc., a division of Wyse Technology Inc. Microsoft, Windows, and Windows NT are registered trademarks of Microsoft Corporation. Other product names mentioned herein are for identification purposes only and may be trademarks and/or registered trademarks of their respective companies.  
09/04 880924-45 Rev. A