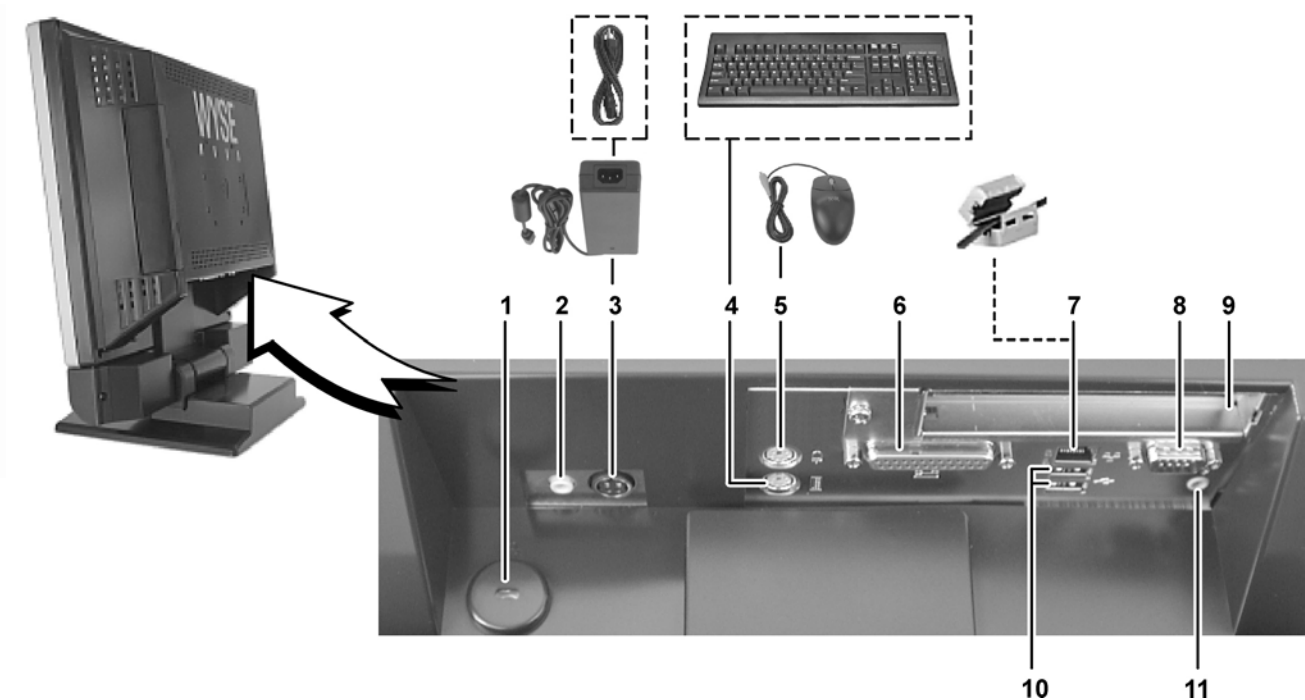


# Winterm™ Model 3650XE Thin Client

## Quick-Start Guide

### 1 Connect

**Caution:** Improper connection, mounting, or use of this product could result in component failure and/or flash memory corruption. Read the following caution statements before setting up and operating the thin client.



- |                                |                                    |
|--------------------------------|------------------------------------|
| 1 Lock                         | 7 Network connection, 10/100Base-T |
| 2 Speaker out                  | 8 Serial port                      |
| 3 +12V Power cable interface   | 9 PCI expansion card               |
| 4 PS/2-type keyboard interface | 10 USB port (2)                    |
| 5 PS/2-type mouse interface    | 11 Microphone                      |
| 6 Parallel port                |                                    |

#### Caution Statements:

##### Setup

- Do not connect to AC power until all thin client connections are made, including the power adapter. Connecting or disconnecting components or devices on the back panel when the thin client is receiving AC power can cause power surges and damage the thin client. (USB ports are hot-swappable.)
- Do not force a connector into its socket. If any undue resistance is encountered, ensure that the connector is correctly oriented to the receptacle.

##### Orientation and Venting

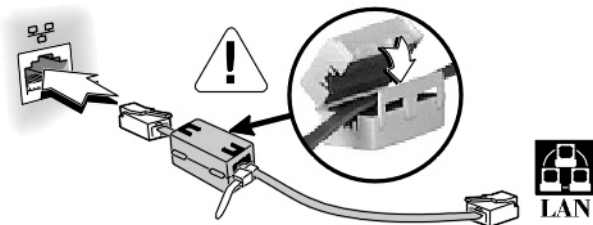
- Mount the thin client only as shown above. Improper orientation could inhibit the dissipation of heat from the thin client and damage it.

- Allow sufficient space around the thin client for ventilation; do not place the thin client in any enclosure that restricts airflow around the thin client; do not place any objects on the thin client. Product environmental specifications are available in the product data sheet through Wyse's Web site at <http://www.wyse.com/products/winterm/products.htm>.

#### Power Sources

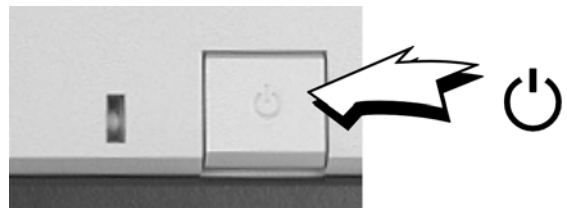
- To ensure regulatory compliance, use only the power supply included in the shipping box, or a Wyse-approved equivalent, with the thin client. Also, the noise suppressor (ferrite bead) included in the box with the thin client must be installed on the network cable as described following these caution statements. Refer to the regulatory notices in the thin client's on-line documentation at <http://www.wyse.com/products/winterm/quickstart/3000.htm>.
- To prevent accidental loss of power, brown out, and spikes which could damage the thin client, avoid connecting it to any AC outlet which can be accidentally switched off (including power strips) or hard resetting the thin client by holding down the power button.
- When turning off the thin client, be sure to perform a complete shutdown (via the user interface or power button). Do not disconnect the AC power cord or shut off power at a circuit breaker, etc., to turn off the thin client.
- To prevent accidental loss of power, brown out, and spikes which could damage the thin client, avoid connecting it to any AC outlet which can be accidentally switched off (including power strips) or hard resetting the thin client by holding down the power button.
- Surge protectors for electrical devices are recommended in areas of lightning. However, when lightning is occurring, your equipment should be properly shut down and unplugged from AC power until the storm has passed.

**Note:** To ensure that the product complies with EN55022B and FCC Class B requirements, install the ferrite bead on your LAN cable as shown in the illustration.

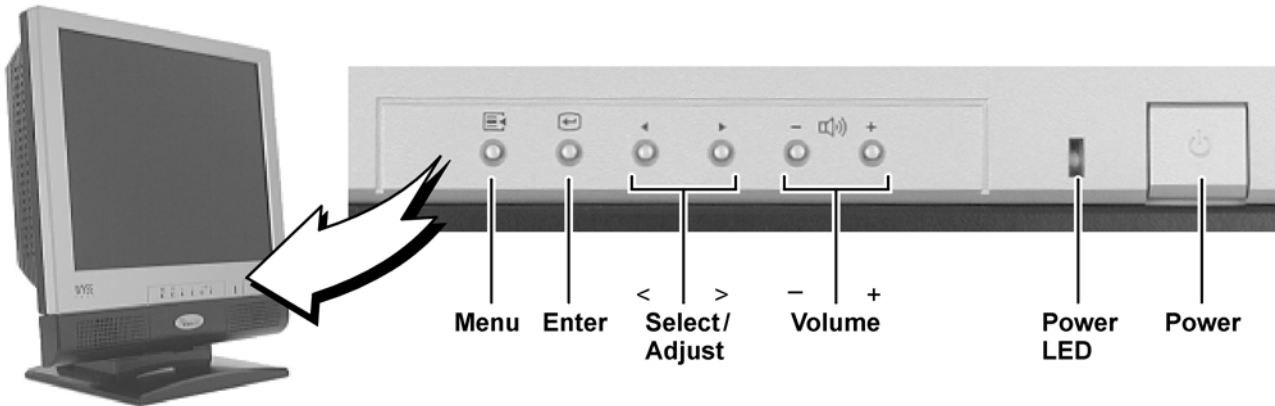


## 2 Turn On

**Important:** A printed copy of the Wyse Technology End User License Agreement is included in the shipping box and provided for your reference only. The license at <http://www.wyse.com/license> as of the purchase date is the controlling licensing agreement. By copying, using, or installing the software or the product, you agree to be bound by those terms.



### 3 User Controls



Control Button	Function
Menu	Opens the On-Screen Display (OSD) window or exits a function menu.
Enter	Selects a function or saves a setting change.
Select/Adjust (< or >)	Navigates within a display and adjusts control levels.
Volume (+ or -)	Adjusts audio volume.
Power	Turns the thin client power on or off. The Power LED is green when the thin client is on.

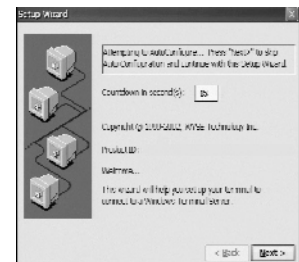
For more information about customizing the Model 3650XE, refer to the thin client's hardware guide at <http://www.wyse.com/products/winterm/quickstart/3000.htm>.

### 4 Configure – Setup is quick and simple...

The logo will appear on the screen, followed by:

- The Setup Wizard, if it is the first time that you have turned on your thin client.
- The Winterm Connection Manager dialog box, if the Setup Wizard has been completed.

**Caution:** It is strongly advised that the administrative password be changed immediately upon configuring the thin client for use.



### 5 Help – Need more information?

For the on-line documentation:

<http://www.wyse.com/products/winterm/quickstart/3000.htm>

Wyse™ Rapport® for Wyse, the remote management software that comes with this thin client:

<http://www.wyse.com/bundle>

For Product Support, Warranty and warranty registration\* process:

<http://www.wyse.com/serviceandsupport/service/service.htm>

†The standard warranty is one year. Register within 90 days to get 2 years' extended warranty at no cost.



Wyse Technology Inc.  
3471 North First Street  
San Jose, CA 95134-1801 U.S.A.

883830-01 Rev. A  
April 2004

[www.wyse.com](http://www.wyse.com)

©2004 Wyse Technology Inc. All rights reserved.

---